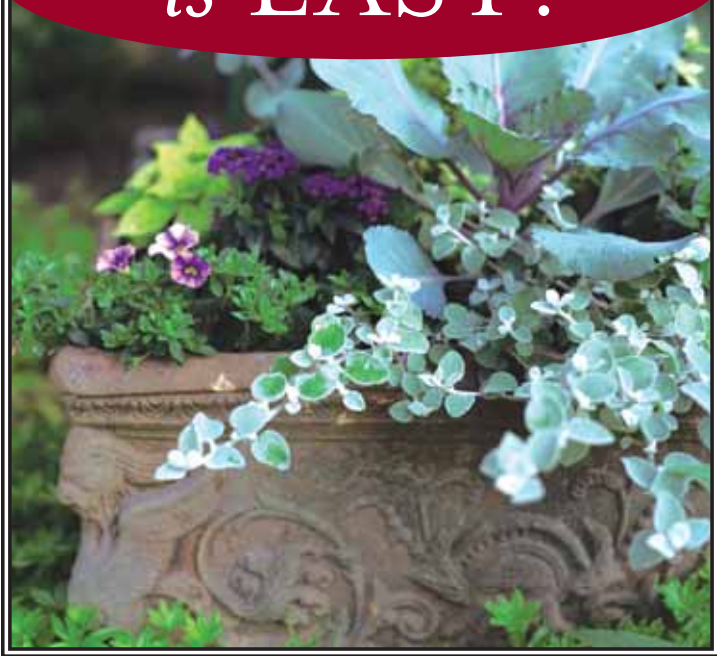


# CONTAINER GARDENING is EASY!



The versatile container garden can enliven an entryway, decorate a deck or provide a backyard on a balcony. Move, change or re-arrange... there's no limit to the creative possibilities.

## WHAT YOU NEED



### Container

The pot should have drainage holes, but if it doesn't you can add stones at the bottom.



### Soil

Soil for your container should be lightweight. This provides for ease of maneuvering and proper drainage. We sell a variety of excellent soils created especially for potted plants.



### Plants

*Thrillers, Fillers & Spillers*

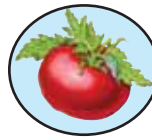
**THRILLER:** Choose a striking plant for the center or back of your container like a spike or grass.

**FILLER:** Next add plants that will fill out the pot—petunia, lantana, million bells—to name a few.

**SPILLER:** Near the edge add a spiller—a trailing plant like fan flower, bacopa or verbena.

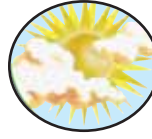
over

## Vegetables



No room for a vegetable garden? Containers are the answer! Choose a container that is at least 12" wide. Plant individual plants in each container (i.e. eggplant, tomato) or make it a combo by adding herbs.

## WHERE



### Shade or Sun

Shade plants include impatiens, lobelia, and coleus. Most of the plants in the outdoor garden center like the sun. Our icons and tags will tell you whether the plants prefer sun or shade or can tolerate both.

## MAINTENANCE



### Watering

Don't forget! Don't know if your container needs water? Try the finger test. If the soil is dry, water. If the plants start to wilt, they're probably telling you they are thirsty. However, be careful not to over water. If the container sits in a pan full of water or the pot does not have proper drainage, the roots will suffocate.

### Fertilizer

Plants, like us, need food. Start off with a slow release fertilizer added to the soil. At least once a week, water with a water soluble fertilizer. Million bells and trailing petunia will benefit from an iron supplement during the summer.

*You are only limited by your imagination.*

*Have fun and take pictures!*

## QUESTIONS?

The information in this pamphlet was designed to get you started. We can help fill in the blanks. Once you experience the joy of growing, you will be inspired to learn more. Please do not hesitate to get help from our extremely knowledgeable staff. We are determined to help make your project a success!



POUGHKEEPSIE • KINGSTON • NEWBURGH

*www.adamsfarms.com*